

Welton Road, Brough, East Yorkshire, HU15 1AF

☎ 01482 669982

✉ info@limbestateagents.co.uk

🌐 limbestateagents.co.uk

**Limb**  
MOVING HOME



*12 Swale Road, Brough, East Yorkshire, HU15 1GG*

📍 3 Storey Townhouse

📍 3 Beds/2 Baths

📍 Modern Dining Kitchen

📍 Council Tax Band = D

📍 Spacious Lounge

📍 Driveway & Garage

📍 Westerly Rear Garden

📍 Freehold / EPC = C

**£215,000**

## INTRODUCTION

This modern three-storey townhouse offers a versatile and well-proportioned layout, ideal for growing families or those seeking a flexible home-working environment. The ground floor opens into a welcoming entrance hallway with a practical cloakroom/W.C. and a contemporary kitchen that leads directly out to the rear garden.

The first floor features a comfortable lounge and a well-proportioned bedroom, while the second floor houses two further bedrooms, including a main bedroom with an en-suite shower room, alongside the family bathroom.

Externally, the property benefits from a driveway providing off-street parking for two vehicles, leading to an integral garage. The rear garden is mainly laid to lawn with paved patio areas, all enclosed by timber fencing for added privacy.

## LOCATION

Brough is a highly sought-after location in the East Riding of Yorkshire, offering an exceptional blend of modern amenities, a strong community feel, and unparalleled connectivity. Positioned perfectly on the A63, Brough has evolved into a premier residential village providing a welcoming and thriving environment ideal for families and professionals alike. Excellent facilities cater to all ages.

Education is served by Hunsley Primary School and Brough Primary School for younger students. For secondary education, the area is served by the well-regarded South Hunsley School and Sixth Form College in the adjacent village of Melton. Public schooling is also available locally with a combination of Hymers College in Hull, Hull Tranby in Anlaby and Pocklington School within striking distance.

The village centre and nearby retail parks offer comprehensive shopping facilities, including a number of Supermarkets, a variety of local shops, and popular dining and drinking options. Recreational needs are well catered for with Brantingham Park, Blackburn Leisure Sports & Community Club, nearby Welton Waters plus the challenging Brough Golf Course.

Brough provides superb regional connectivity, arguably the best in the area for commuters. Immediate access to the A63 and the wider M62 motorway corridor is available. Furthermore, Brough railway station is a major draw, providing regular services to Hull, Leeds, and York, alongside direct high-speed links to London King's Cross.

Accessibility to key destinations includes:

- Hull City Centre: Approx. 10 miles
- Beverley (Historic Market Town): Approx. 12 miles
- York: Approx. 35 miles
- Leeds: Approx. 60 miles

Beyond the immediate vicinity, the location offers unparalleled access to the beauty of the East Riding countryside. The nearby Yorkshire Wolds present a stunning landscape of peaceful walking trails and traditional villages. This area is perfect for outdoor enthusiasts, offering easy exploration of the coast, including the dramatic clifftops and sandy beaches. The thriving market town of Beverley is nearby with the attraction of York still convenient yet a little more distant.

## ACCOMMODATION

The layout and room sizes are detailed on the attached floorplan.

Residential entrance door to:

## ENTRANCE HALLWAY

With staircase leading up to the first floor and internal access door to the garage.



## CLOAKS/W.C.

With low flush W.C. and wash hand basin.



## KITCHEN

Having a range of fitted base and wall units with contrasting worktops incorporating a sink and drainer with mixer tap, oven, microwave oven, gas hob with filter above, fridge freezer, plumbing for a dishwasher and washing machine. Window and external access door to rear.



## FIRST FLOOR

### LANDING

With staircase leading up to the second floor.

## LOUNGE

With windows to the rear elevation.



## BEDROOM 3

Window to the front elevation.



## SECOND FLOOR

### LANDING

## BEDROOM 1

With built in wardrobes and windows to the rear elevation.



## EN-SUITE SHOWER ROOM

With suite comprising a shower enclosure, wash hand basin and low flush W.C.



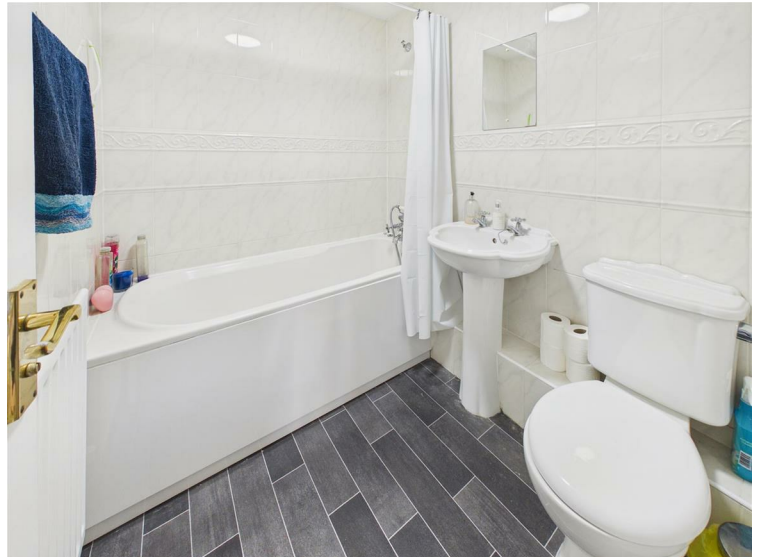
## *BEDROOM 2*

With built in wardrobe and storage cupboard. Windows to the front elevaton.



## *FAMILY BATHROOM*

With suite comprising a bath, wash hand basin and low flush W.C. Tiling to walls.



## *OUTSIDE*

The property benefits from a driveway providing off-street parking for two vehicles, leading to an integral garage. The rear garden is mainly laid to lawn with paved patio areas, all enclosed by timber fencing for added privacy.



## *REAR VIEW*



## *HEATING*

The property has the benefit of gas central heating.

## *GLAZING*

The property has the benefit of uPVC double glazing.

## *TENURE*

Freehold

## *COUNCIL TAX BAND*

From a verbal enquiry we are led to believe that the Council Tax band for this property is Band D. We would recommend a purchaser make their own enquiries to verify this.

## *FIXTURES & FITTINGS*

Please note those items specifically mentioned in these particulars are to be deemed as being included in the purchase price unless otherwise agreed in writing. Certain other items may be available by separate negotiation as to price. Those items visible in the photographs such as furniture and personal belongings are not included in the sale price.

## *VIEWING*

Strictly by appointment through the agent. Brough Office 01482 669982. A prospective viewer should check on the availability of this property prior to viewing.

## *AGENTS NOTE*

For clarification, we wish to inform prospective purchasers that we have not carried out a detailed survey, nor tested the services, appliances, plumbing or heating system and specific fittings for this property. All measurements provided are approximate and for guidance purposes only. Floor plans are included as a service to our customers and are intended as a GUIDE TO LAYOUT only, NOT TO SCALE. Limb Estate Agents Ltd for themselves and for the vendors or lessors of this property whose agents they are give notice that (i) the particulars are set out as a general outline only for the guidance of intending purchasers or lessees, and do not constitute any part of an offer or contract (ii) all descriptions, dimensions, references to condition and necessary permissions for use and occupation, and other details are given in good faith and are believed to be correct and any intending purchaser or tenant should not rely on them as statements or representations of fact but must satisfy themselves by inspection or otherwise as to the correctness of each of them (iii) no person in the employment of Limb Estate Agents Ltd has any authority to make or give any representation or warranty whatever in relation to this property. If there is any point which is of particular importance to you, please contact the office and we will be pleased to check the information, particularly if you contemplate travelling some distance to view the property. These particulars are issued on the strict understanding that all negotiations are conducted through Limb Estate Agents Ltd.

## *PHOTOGRAPH DISCLAIMER*

In order to capture the features of a particular room we will mostly use wide angle lens photography. This will sometimes distort the image slightly and also has the potential to make a room look larger. Please therefore refer also to the room measurements detailed within this brochure. AI may have also been used to enhance photography.

## *PROPERTY TO SELL?*

If you have a property to sell we would be delighted to provide a free/no obligation valuation and marketing advice. Call us now on 01482 669982.





